

# Minor Repair Guide

You can watch videos on how to do all this and MORE at  
[www.youtube.com/FreshChoiceTobacco](http://www.youtube.com/FreshChoiceTobacco)

Tools required for all repairs:

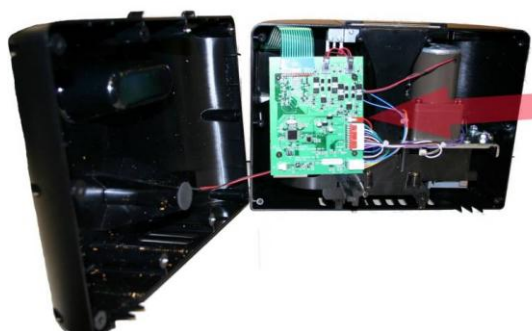
3/32" Allen wrench (for metering set screw)

- 1/16" Allen wrench (for tube valve)
- 1/8" Allen wrench (gear and cam follower set screws)
- #2 Phillips head 4" screwdriver
- #2 Square head 4" screwdriver (needed for machines bought before 10/2011)

## How to take the machine out of the case:

Tools required for this step: #2 Phillips screwdriver (Pre-10/11 machines also needs #2 Square screwdriver)

Place the machine in your lap with the front faced down. Using the #2 Square head screwdriver, remove the 10 screws from the rear case. DO NOT REMOVE THE REAR CASE. Open the case from the right side of the machine and locate the black/red power supply cable. This cable needs to be disconnected from the control board to remove the rear case. Pull the cable towards the right side of the machine to disconnect the connector. Remove rear case and set aside.



After the rear case is removed, you will need to disconnect the green ribbon cable and the connector with blue/yellow wires. Gently pull the ribbon cable towards the top of the machine. Gently pull the blue/yellow connector towards the right of the machine.



Using the #2 Phillips head screwdriver, locate and remove the 4 Phillips screws that will allow you to remove the machine from the front case. You can now lift the machine from inside the front case. *(Please skip to Page 3 for instructions on replacing your tube valve)*

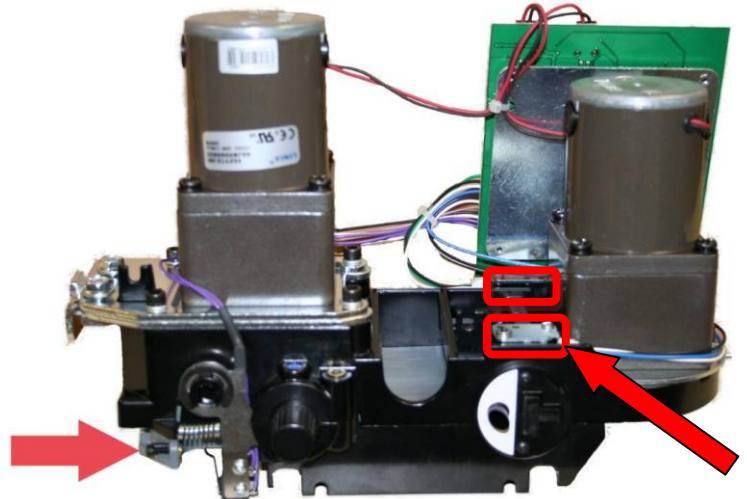


## How to adjust the compaction of your machine:

Tools required for this step: 3/32" Allen wrench, #2 Phillips head screwdriver

Turn the compaction knob to the third setting from the left. Using the 3/32" Allen wrench, turn the compaction screw 1/4 revolution clockwise to increase compaction. Turn the screw counterclockwise to decrease compaction. It is also good preventative maintenance to remove the two ejection sensors with the Phillips screwdriver and blow them out with canned air while the machine is taken apart.

This is a trial and error process. You can now slide the machine into the front case while holding down the tube release knob on the front of the machine. Attach all wiring connectors to the control board. You do not have to screw the machine into place yet. Make some cigarettes to see if the compaction is set properly. If not, remove the machine from the front case and readjust the compaction screw. Once you are happy with the adjustment, you can reassemble the machine. *(Please skip to Page 3 if you are ready to reassemble your machine)*

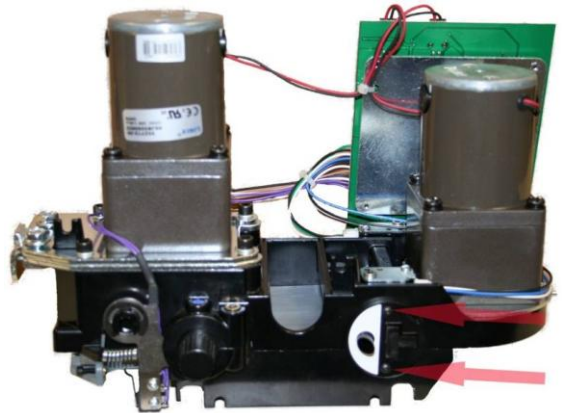


## How to replace your machine's tube valve:

Tools required for this step:

- 1/16" Allen wrench

Using the 1/16" Allen wrench, remove the 2 screws that attach the tube valve assembly. Attach the new tube valve assembly and replace screws. You are now ready to reverse the steps to reassemble the machine.



## How to reassemble your machine:

Tools required for this step:

- #2 Phillips head screwdriver
- #2 Square head screwdriver (for pre 10/11 machines)

You are now ready to reverse the steps under the heading "How to take the machine out of the case" to reassemble the machine.

**YOU MUST HOLD DOWN THE TUBE RELEASE KNOB WHEN INSERTING THE MACHINE INTO THE FRONT CASE!**

Failure to do so will damage the new tube valve.



**You can watch videos on how to do all this and MORE at  
[www.youtube.com/FreshChoiceTobacco](http://www.youtube.com/FreshChoiceTobacco)**